



<b>BE - Schraubarmatur Typ IR / BE- Screw fitting type IR</b>					
Rohrstutzen / metric Standpipe					
Art. Nr. Art. N°	Bezeichnung Description	Standard	DN	R1	S1
235.350	IR 06/06		06	L/S 06	12
235.351	IR 06/08	•L	06	L/S 08	12
235.352	IR 06/10	•S	06	L/S 10	12
235.353	IR 06/12		06	L/S 12	14
235.355	IR 08/08		08	L/S 08	14
235.356	IR 08/10	•L	08	L/S 10	14
235.357	IR 08/12	•S	08	L/S 12	14
235.360	IR 10/10		10	L/S 10	17
235.361	IR 10/12	•L	10	L/S 12	17
235.362	IR 10/14	•	10	S14	17
235.363	IR 10/15		10	L15	17
235.365	IR 12/15	•	12	L15	19
235.366	IR 12/16	•	12	S16	19
235.367	IR 12/18		12	L18	19
235.370	IR 16/18	•	16	L18	22
235.371	IR 16/20	•	16	S20	22
235.375	IR 20/20*		20	S20	27
235.376	IR 20/22*	•	20	L22	27
235.377	IR 20/25*	•	20	S25	27
235.380	IR 25/28*	•	25	L28	32
235.381	IR 25/30*	•	25	S30	32



<b>45° BE - Schraubarmatur Typ IKS ../4 / 45° BE- Screw fitting type IKS ../4</b>					
Rohrstutzen / metric Standpipe					
Art. Nr. Art. N°	Bezeichnung Description	Standard	DN	R1	S1
235.400	IKS 06/06/4		06	L/S 06	12
235.401	IKS 06/08/4	•L	06	L/S 08	14
235.402	IKS 06/10/4	•S	06	L/S 10	14
235.405	IKS 08/10/4	•L	08	L/S 10	14
235.406	IKS 08/12/4	•S	08	L/S 12	17
235.410	IKS 10/12/4	•L	10	L/S 12	19
235.411	IKS 10/14/4	•	10	S14	19
235.415	IKS 12/15/4	•	12	L15	19
235.416	IKS 12/16/4	•	12	S16	24
235.420	IKS 16/18/4	•	16	L18	27



<b>90° BE - Schraubarmatur Typ IKS ../9 / 90° BE- Screw fitting type IKS ../9</b>					
Rohrstutzen / metric Standpipe					
Art. Nr. Art. N°	Bezeichnung Description	Standard	DN	R1	S1
235.450	IKS 06/06/9		06	L/S 06	12
235.451	IKS 06/08/9	•L	06	L/S 08	14
235.452	IKS 06/10/9	•S	06	L/S 10	14
235.453	IKS 06/12/9		06	L/S 12	17
235.455	IKS 08/08/9		08	L/S 08	14
235.456	IKS 08/10/9	•L	08	L/S 10	14
235.457	IKS 08/12/9	•S	08	L/S 12	17
235.460	IKS 10/10/9		10	L/S 10	17
235.461	IKS 10/12/9	•L	10	L/S 12	17
235.462	IKS 10/14/9	•	10	S14	19
235.463	IKS 10/15/9		10	L15	19
235.465	IKS 12/15/9	•	12	L15	20
235.466	IKS 12/16/9	•	12	S16	20
235.467	IKS 12/18/9		12	L18	22
235.470	IKS 16/18/9	•	16	L18	24
235.471	IKS 16/20/9	•	16	S20	24
235.475	IKS 20/20/9*		20	S20	27
235.476	IKS 20/22/9*	•	20	L22	27
235.477	IKS 20/25/9*	•	20	S25	30

\* Armaturen DN20 / DN25 auf Anfrage

\* Fittings DN20 / DN25 on request

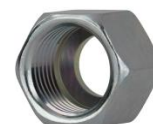
<b>CEL - Schraubarmatur Typ IAM / CEL fitting type IAM</b>						
Leichte Baureihe. Außengewinde mit Schneidringsitz (24°-Innenkonus). <i>Light series. Male thread with cutting ring fit.</i>						
Art. Nr.	Bezeichnung	Standard	DN	G1	R1	S1
Art. N°	Description					
235.250	IAM 06/14	•	06	M14x1,5	L08	17
235.255	IAM 08/16	•	08	M16x1,5	L10	17
235.260	IAM 10/18	•	10	M18x1,5	L12	19
235.265	IAM 12/22	•	12	M22x1,5	L15	24



<b>CES - Schraubarmatur Typ IAM / CEL fitting type IAM</b>						
Schwere Baureihe. Außengewinde mit Schneidringsitz (24°-Innenkonus). <i>Heavy series. Male thread with cutting ring fit.</i>						
Art. Nr.	Bezeichnung	Standard	DN	G1	R1	S1
Art. N°	Description					
235.280	IAM 06/18/10	•	06	M18x1,5	S10	19
235.287	IAM 10/22/14	•	10	M22x1,5	S14	22
235.290	IAM 12/24/16	•	12	M24x1,5	S16	24



<b>Überwurfmutter Typ 15-30/... / Screw cap type 15-30/...</b>					
Art. Nr.	Bezeichnung	R1	G1	S1	
Art. N°	Description				
415.010	15-30/L 06	L06	M12x1,5	14	
415.011	15-30/L 08	L08	M14x1,5	17	
415.012	15-30/L 10	L10	M16x1,5	19	
415.013	15-30/L 12	L12	M18x1,5	22	
415.014	15-30/L 15	L15	M22x1,5	27	
415.015	15-30/L 18	L18	M26x1,5	32	
415.016	15-30/L 22	L22	M30x2	36	
415.017	15-30/L 28	L28	M36x2	41	
415.020	15-30/S 06	S06	M14x1,5	17	
415.021	15-30/S 08	S08	M16x1,5	19	
415.022	15-30/S 10	S10	M18x1,5	22	
415.023	15-30/S 12	S12	M20x1,5	24	
415.024	15-30/S 14	S14	M22x1,5	27	
415.025	15-30/S 16	S16	M24x1,5	30	
415.026	15-30/S 20	S20	M30x2	36	
415.027	15-30/S 25	S25	M36x2	46	
415.028	15-30/S 30	S30	M42x2	50	



<b>Schneidring Typ 15-31/... / Cutting ring type 15-31/...</b>			
Art. Nr.	Bezeichnung	R1	
Art. N°	Description		
415.210	15-31/ L/S 06		L/S 06
415.211	15-31/ L/S 08		L/S 08
415.212	15-31/ L/S 10		L/S 10
415.213	15-31/ L/S 12		L/S 12
415.214	15-31/L 15		L15
415.215	15-31/L 18		L18
415.216	15-31/L 22		L22
415.217	15-31/L 28		L28
415.224	15-31/S 14		S14
415.225	15-31/S 16		S16
415.226	15-31/S 20		S20
415.227	15-31/S 25		S25
415.228	15-31/S 30		S30



<b>Standard</b>	Standardgröße / Standard size
<b>DN</b>	Durchmesser Nominal / Diameter nominal
<b>G1</b>	Gewinde / Thread
<b>R1</b>	Rohrgröße / Pipe size
<b>S1</b>	Schlüsselweite / Hexagon