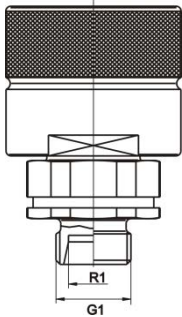


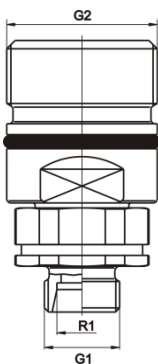
Kupplungsstecker BG3 Typ SK3 ..-S / Screw on couplings male type SK3 ..-S
Baugröße 3. Betriebsdruck: max. 400 bar / Size 3

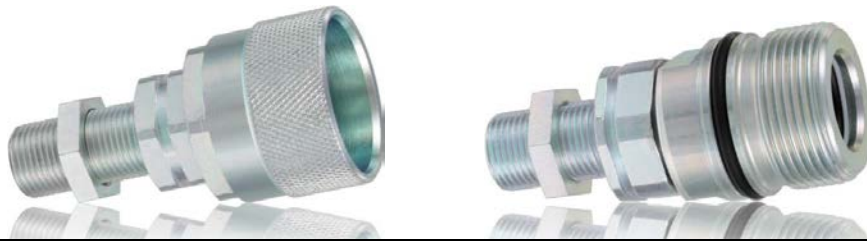
Art. Nr. Art. N°	Bezeichnung Description	R1	G1
289.510	SK3-IG G3/8"-S	-	IG G3/8"
289.511	SK3-IG G1/2"-S	-	IG G1/2"
289.514	SK3-IG M18x1,5-S	-	IG M18x1,5
289.515	SK3-IG M22x1,5-S	-	IG M22x1,5
289.520	SK3-08L-S	L08	M14x1,5
289.521	SK3-10L-S	L10	M16x1,5
289.522	SK3-12L-S	L12	M18x1,5
289.523	SK3-15L-S	L15	M22x1,5
289.524	SK3-18L-S	L18	M26x1,5
289.530	SK3-08S-S	S08	M16x1,5
289.531	SK3-10S-S	S10	M18x1,5
289.532	SK3-12S-S	S12	M20x1,5
289.533	SK3-14S-S	S14	M22x1,5
289.534	SK3-16S-S	S16	M24x1,5



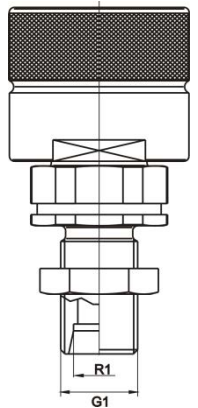
Kupplungsmuffen BG3 Typ SK3 ..-M / Screw on couplings female type SK3 ..-M
Baugröße 3. Betriebsdruck: max. 400 bar / Size 3

Art. Nr. Art. N°	Bezeichnung Description	R1	G1	G2
289.410	SK3-IG G3/8"-M	-	IG G3/8"	M36x2
289.411	SK3-IG G1/2"-M	-	IG G1/2"	M36x2
289.414	SK3-IG M18x1,5-M	-	IG M18x1,5	M36x2
289.415	SK3-IG M22x1,5-M	-	IG M22x1,5	M36x2
289.420	SK3-08L-M	L08	M14x1,5	M36x2
289.421	SK3-10L-M	L10	M16x1,5	M36x2
289.422	SK3-12L-M	L12	M18x1,5	M36x2
289.423	SK3-15L-M	L15	M22x1,5	M36x2
289.424	SK3-18L-M	L18	M26x1,5	M36x2
289.430	SK3-08S-M	S08	M16x1,5	M36x2
289.431	SK3-10S-M	S10	M18x1,5	M36x2
289.432	SK3-12S-M	S12	M20x1,5	M36x2
289.433	SK3-14S-M	S14	M22x1,5	M36x2
289.434	SK3-16S-M	S16	M24x1,5	M36x2

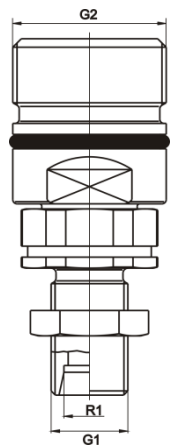




Kupplungsstecker BG3 Typ SKS3--S / Screw on couplings male type SKS3--S			
Schottausführung, Baugröße 3. Betriebsdruck: max. 400 bar / Bulkhead, size 3			
Art. Nr.	Bezeichnung	R1	G1
Art. N°	Description		
289.540	SKS3-08L-S	L08	M14x1,5
289.541	SKS3-10L-S	L10	M16x1,5
289.542	SKS3-12L-S	L12	M18x1,5
289.543	SKS3-15L-S	L15	M22x1,5
289.544	SKS3-18L-S	L18	M26x1,5
289.550	SKS3-08S-S	S08	M16x1,5
289.551	SKS3-10S-S	S10	M18x1,5
289.552	SKS3-12S-S	S12	M20x1,5
289.553	SKS3-14S-S	S14	M22x1,5
289.554	SKS3-16S-S	S16	M24x1,5



Kupplungsmuffen BG3 Typ SKS3--M / Screw on couplings female type SKS3--M				
Schottausführung, Baugröße 3. Betriebsdruck: max. 400 bar / Bulkhead, size 3				
Art. Nr.	Bezeichnung	R1	G1	G2
Art. N°	Description			
289.440	SKS3-08L-M	L08	M14x1,5	M36x2
289.441	SKS3-10L-M	L10	M16x1,5	M36x2
289.442	SKS3-12L-M	L12	M18x1,5	M36x2
289.443	SKS3-15L-M	L15	M22x1,5	M36x2
289.444	SKS3-18L-M	L18	M26x1,5	M36x2
289.450	SKS3-08S-M	S08	M16x1,5	M36x2
289.451	SKS3-10S-M	S10	M18x1,5	M36x2
289.452	SKS3-12S-M	S12	M20x1,5	M36x2
289.453	SKS3-14S-M	S14	M22x1,5	M36x2
289.454	SKS3-16S-M	S16	M24x1,5	M36x2



R1 Rohrgröße / Pipe size
G1 Gewinde / Thread
G2 Gewinde / Thread