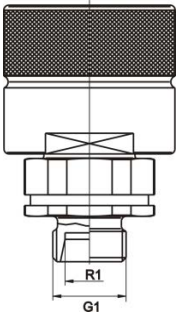


Kupplungsstecker BG6 Typ SK6 ..-S / Screw on couplings male type SK6 ..-S

Baugröße 6. Betriebsdruck: max. 300 bar / Size 6

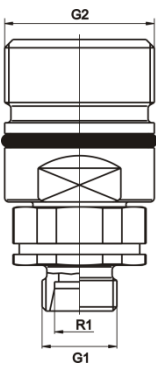
Art. Nr. Art. N°	Bezeichnung Description	R1	G1
289.910	SK6-IG G3/4"-S	-	IG G3/4"
289.911	SK6-IG G1"-S	-	IG G1"
289.920	SK6-18L-S	L18	M26x1,5
289.921	SK6-22L-S	L22	M30x2
289.922	SK6-28L-S	L28	M36x2
289.923	SK6-35L-S	L35	M45x2
289.930	SK6-20S-S	S20	M30x2
289.931	SK6-25S-S	S25	M36x2
289.932	SK6-30S-S	S30	M42x2
289.933	SK6-38S-S	S38	M52x2

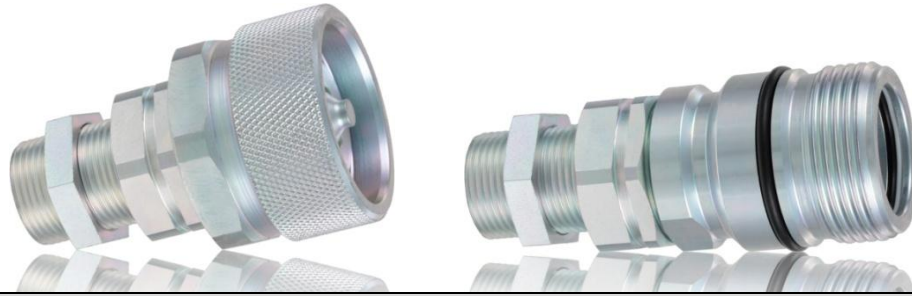


Kupplungsmuffe BG6 Typ SK6 ..-M / Screw on couplings female type SK6 ..-M

Baugröße 6. Betriebsdruck: max. 300 bar / Size 6

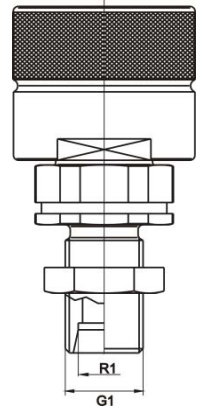
Art. Nr. Art. N°	Bezeichnung Description	R1	G1	G2
289.810	SK6-IG G3/4"-M	-	IG G3/4"	M48x3
289.811	SK6-IG G1"-M	-	IG G1"	M48x3
289.820	SK6-18L-M	L18	M26x1,5	M48x3
289.821	SK6-22L-M	L22	M30x2	M48x3
289.822	SK6-28L-M	L28	M36x2	M48x3
289.823	SK6-35L-M	L35	M45x2	M48x3
289.830	SK6-20S-M	S20	M30x2	M48x3
289.831	SK6-25S-M	S25	M36x2	M48x3
289.832	SK6-30S-M	S30	M42x2	M48x3
289.833	SK6-38S-M	S38	M52x2	M48x3





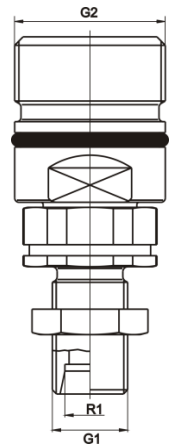
Kupplungsstecker BG6 Typ SKS6 ..-S / Screw on couplings male type SKS6 ..-S
Schottausführung, Baugröße 6. Betriebsdruck: max. 300 bar / Bulkhead, size 6

Art. Nr.	Bezeichnung	R1	G1
Art. N°	Description		
289.940	SKS6-18L-S	L18	M 26x1,5
289.941	SKS6-22L-S	L22	M 30x2
289.942	SKS6-28L-S	L28	M 36x2
289.950	SKS6-20S-S	S20	M 30x2
289.951	SKS6-25S-S	S25	M 36x2
289.952	SKS6-30S-S	S30	M 42x2
289.953	SKS6-38S-S	S38	M 52x2



Kupplungsmuffe BG6 Typ SKS6 ..-M / Screw on couplings male type SKS6 ..-M
Schottausführung, Baugröße 6. Betriebsdruck: max. 300 bar / Bulkhead, size 6

Art. Nr.	Bezeichnung	R1	G1	G2
Art. N°	Description			
289.840	SKS6-18L-M	L18	M26x1,5	M48x3
289.841	SKS6-22L-M	L22	M30x2	M48x3
289.842	SKS6-28L-M	L28	M36x2	M48x3
289.850	SKS6-20S-M	S20	M30x2	M48x3
289.851	SKS6-25S-M	S25	M36x2	M48x3
289.852	SKS6-30S-M	S30	M42x2	M48x3
289.853	SKS6-38S-M	S38	M52x2	M48x3



R1 Rohrgröße / Pipe size
G1 Gewinde / Thread
G2 Gewinde / Thread